



Sainath Education Trust's  
**Rajiv Gandhi College**  
of Arts, Commerce, & Science, Vashi Navi Mumbai  
{Permanently Affiliated to University Of Mumbai}  
**ACCREDITED BY NAAC, GRADE 'B'**

## Feedback Analysis 2019-20

### 1.4.1 – Whether structured feedback received from all the stakeholders:

Students	Yes
Teachers	Yes
Employers	Yes
Alumin	Yes
Parents	Yes

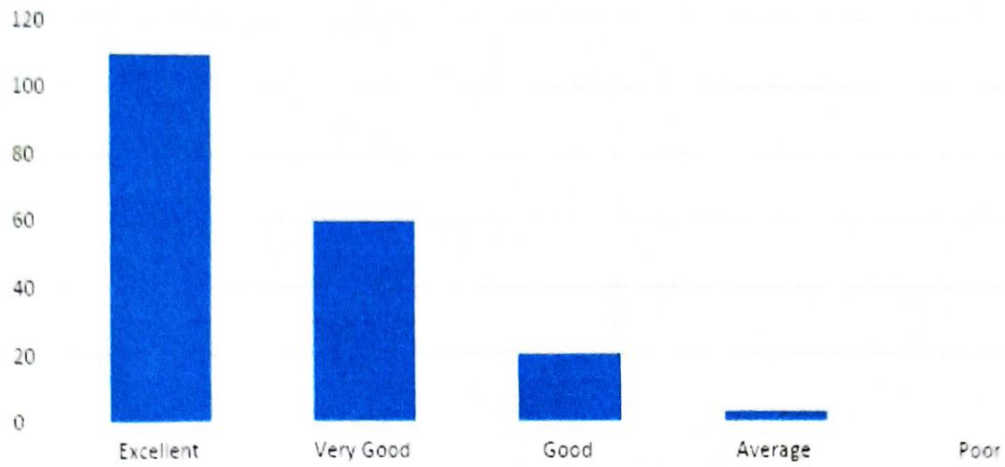
Effective feedback mechanism ensures the constant growth of any organisation progress of the students; therefore, our college has been practicing a system accommodating all the stakeholder. The feedback from various students is collected and thoroughly discussed and analysed in the appropriate

- 1. STUDENTS:** Feedback from the students allows the college to evaluate how service provision is viewed by its most important group of stakeholder feedback was obtained digitally by providing Google form link at department level. Student feedback is based on two criterions: overall college fun and teaching learning process. Formal Feedback collected once in a year Informal Feedback collected regularly by the concerned HOD/Coordinator. that feedback HOD/Coordinator advises the teacher for improvement. This feedback covers teaching learning process, library facilities, co support, freedom to adopt new techniques. We have emphasized on teaching innovativeness, use of ICT in teaching methodologies interactive teach students' involvement in learning. We collect individual teacher's feeds and analyze it.
- 2. PARENTS:** Parents teacher meeting is conducted at departmental level and action is taken for improvement. Letters and messages are seen by parents to inform them about their ward activities. Suggestions and com given by the guardian are also considered for future development.
- 3. ALUMNI:** Our alumni institution enjoys a strong and healthy association with alumni. All feedback is based on the role of the college in the development of student personality and employability, academic excellence. The alumni supply constructive tips on helping the students gain extra recognition and improve themselves. The head of the institution follow an open-door policy through which students, teachers, parents and even alumni can get their grievances redressed.

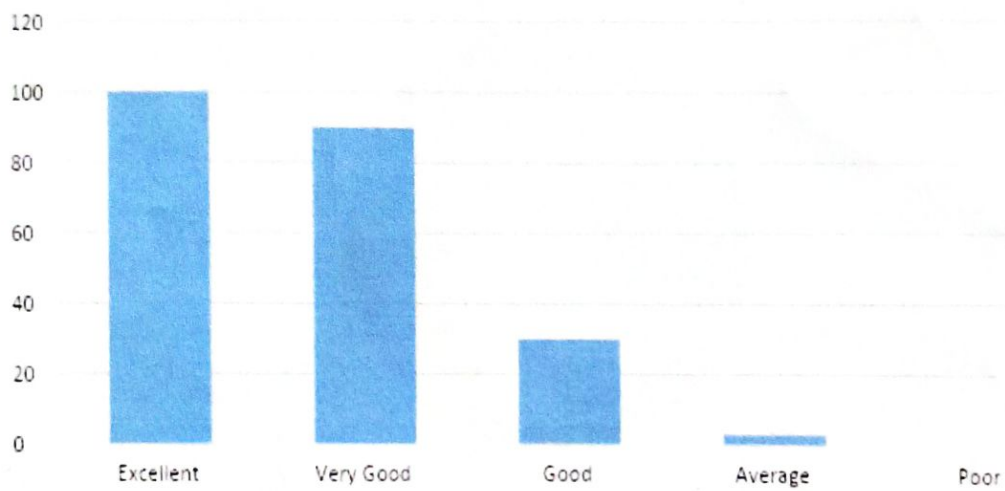


## Alumni Feedback Analysis:

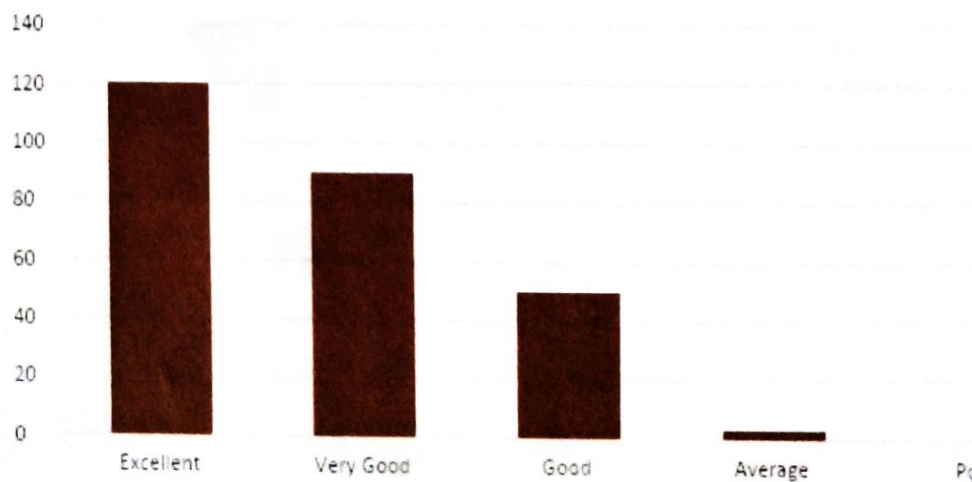
### 1. Admission Procedure



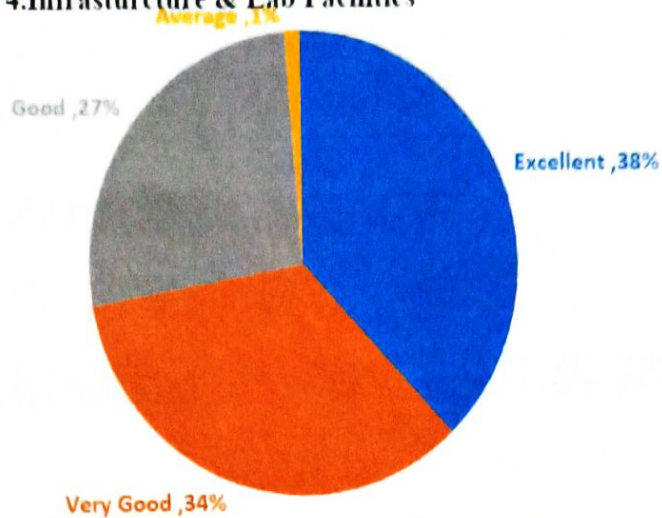
### 2. Fee structure



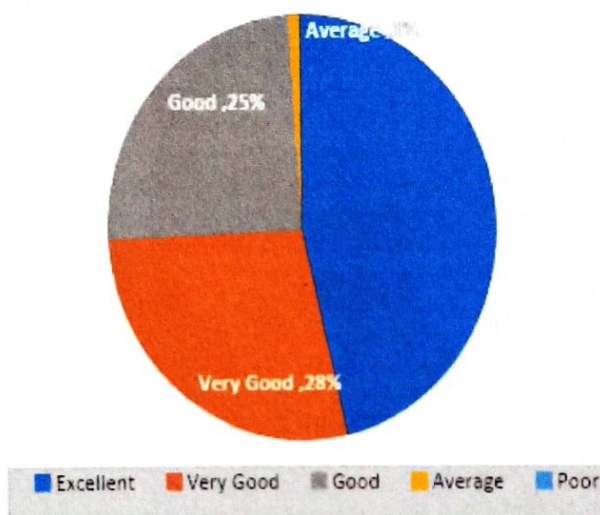
### 3. Environment



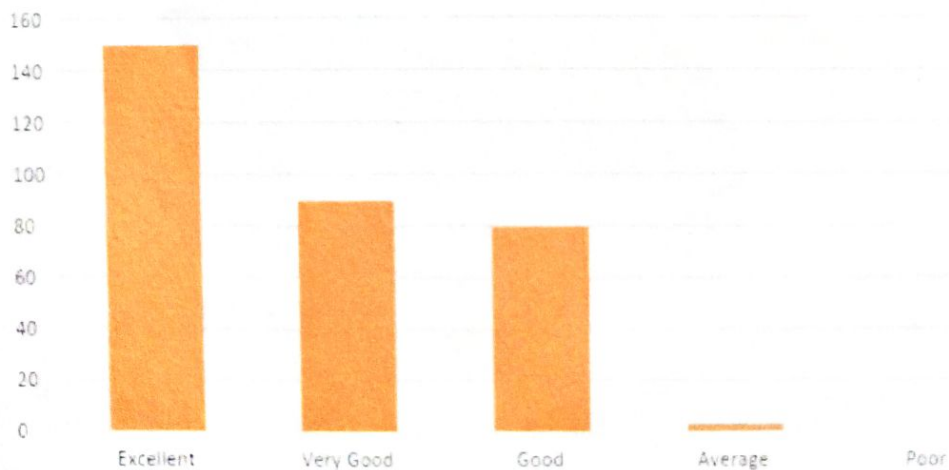
#### 4. Infrastructure & Lab Facilities



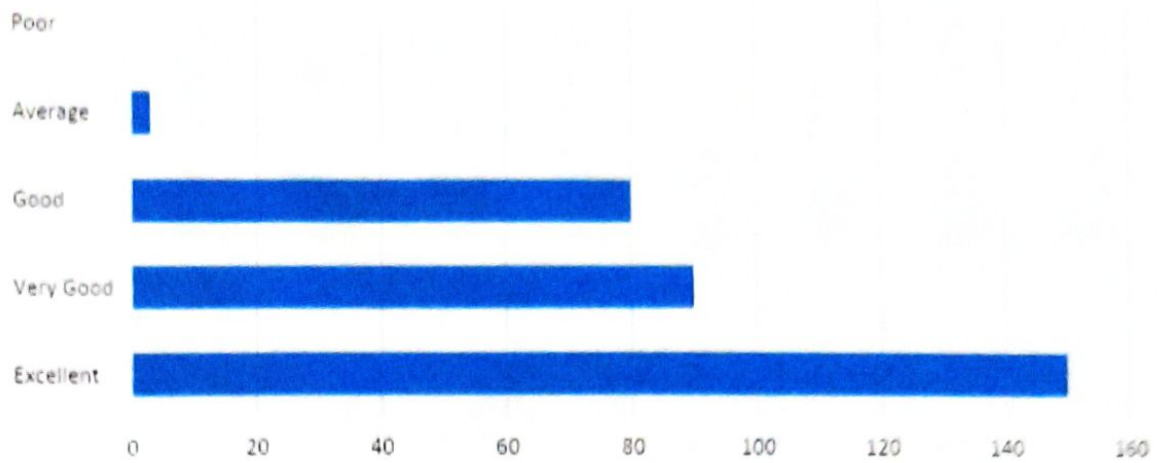
#### 5. Faculty



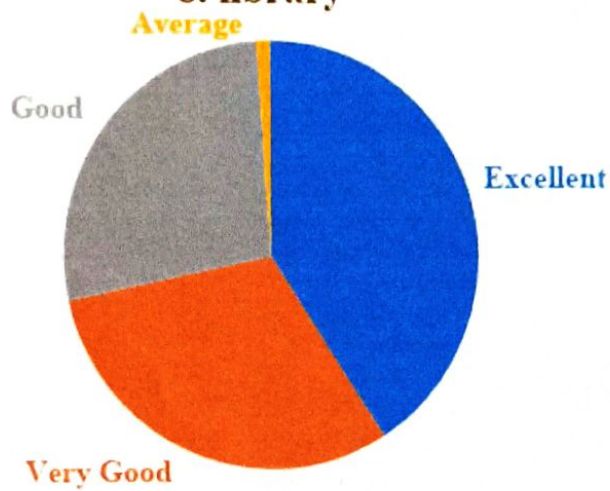
#### 6. Project Guidance



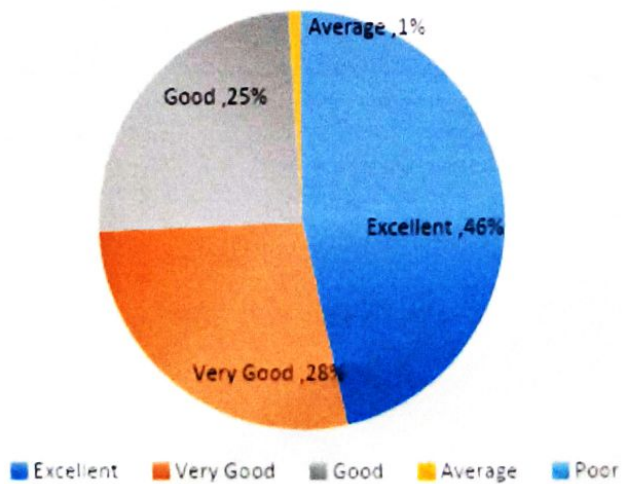
### 7. Quality of support material

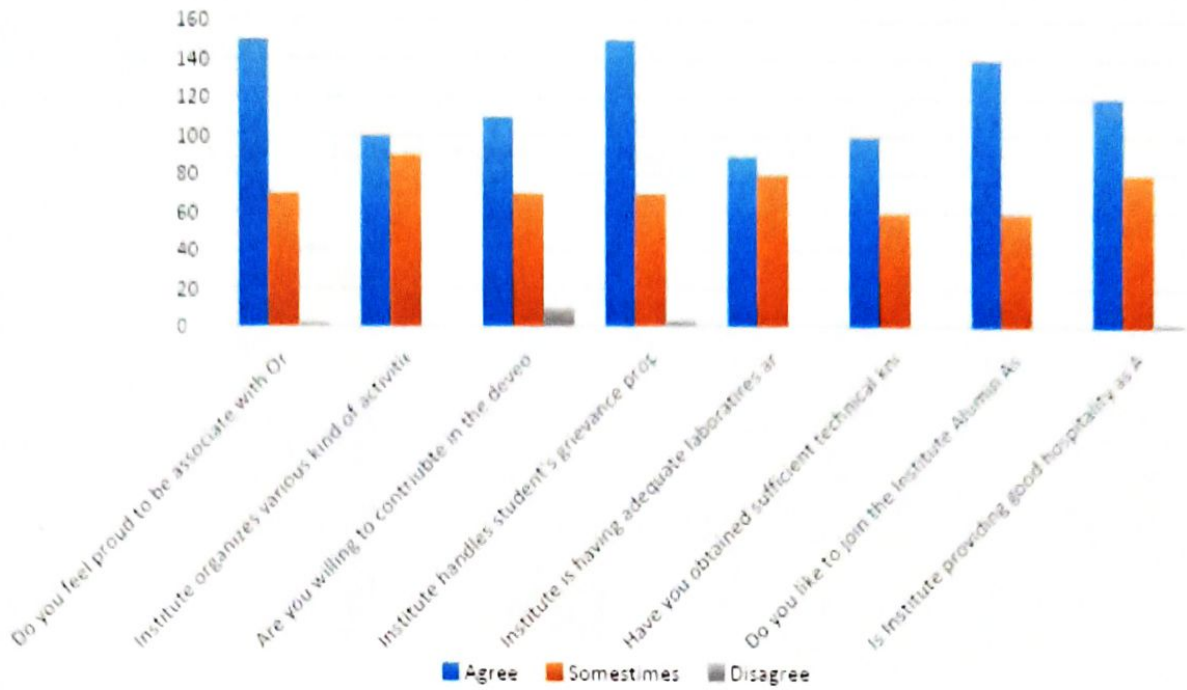


### 8. library



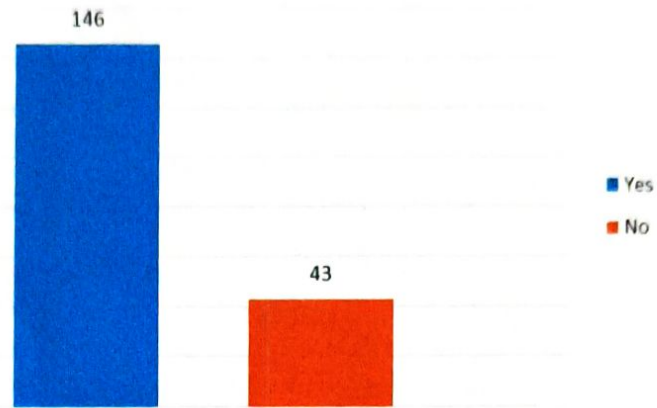
9. How do you rate the courses that you have learnt in relation to your current job.



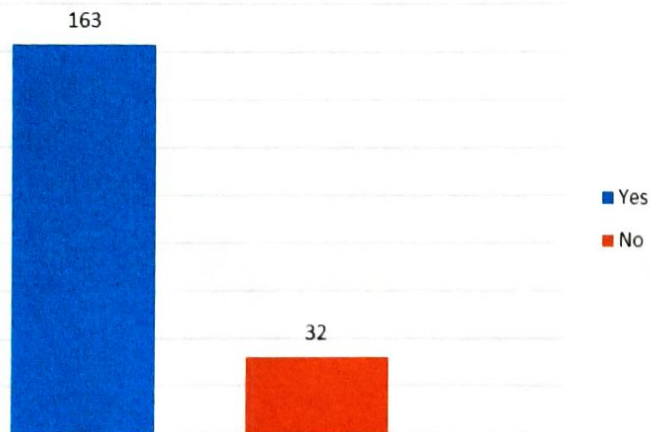


## Feedback analysis Parents

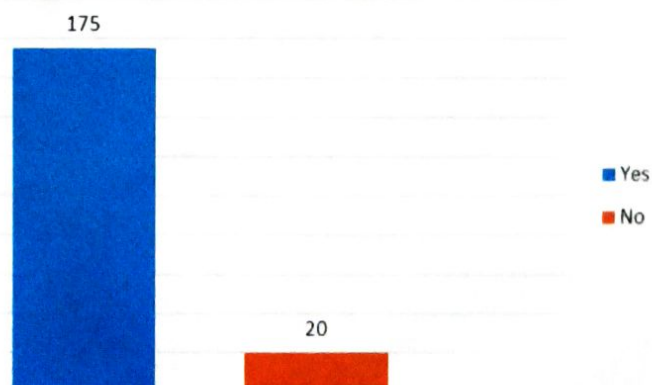
**Q.1. Do you find this institution better than others for your child?**



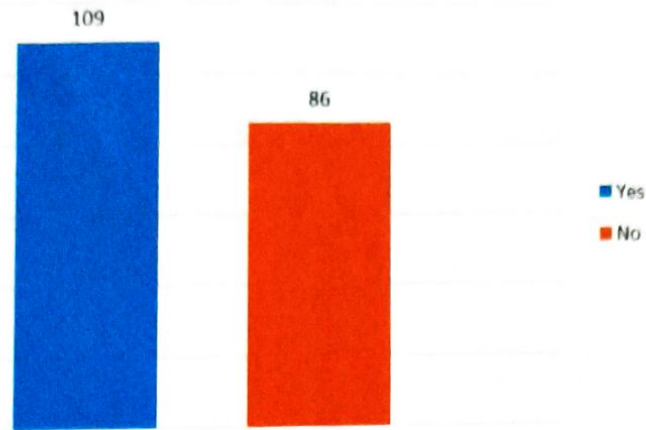
**Q.2. Do you feel facilities in the college are adequate?**



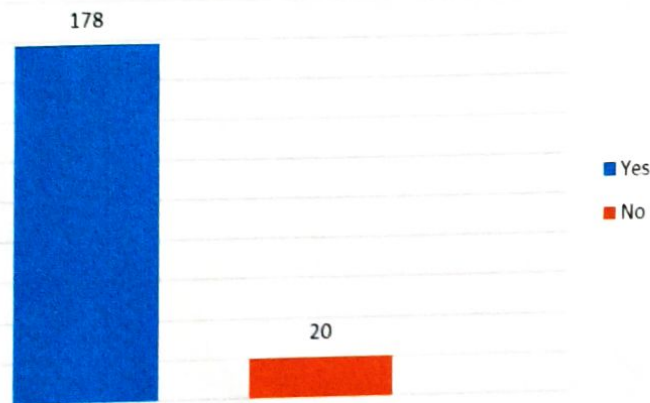
**Q.3 Do you feel that your child is physically secured in the campus**



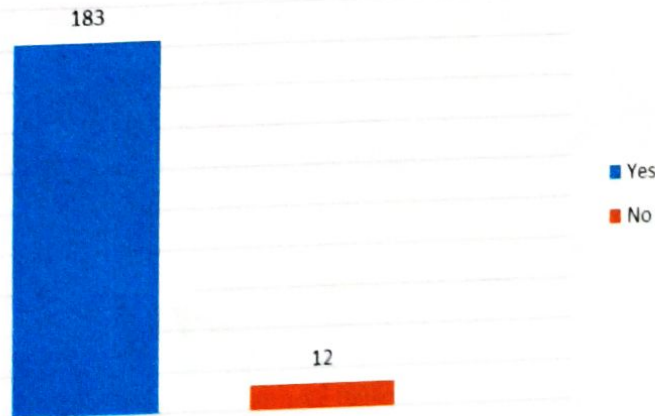
**Q.4. Are you satisfied about canteen facilities?**



**Q.5. Are you satisfied for cooperation from the administrative staff**

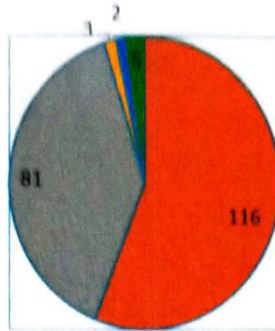


**Q.6. Can you make direct communication with teaching staff?**



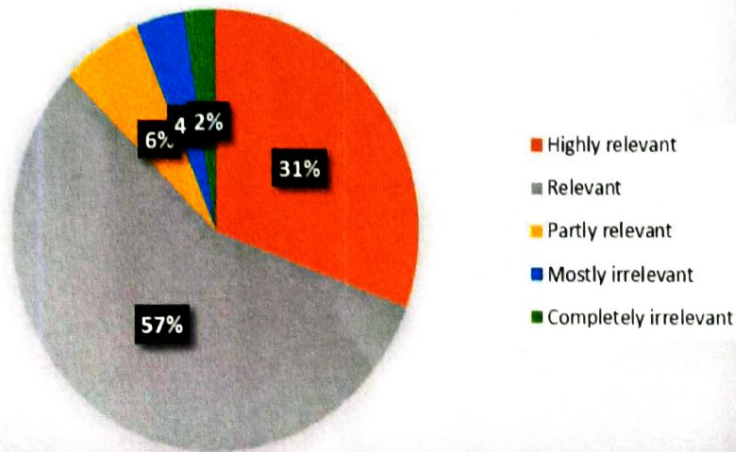
**Students Feedback form of College:**

**Q.1. Your background for benefiting from the course was**



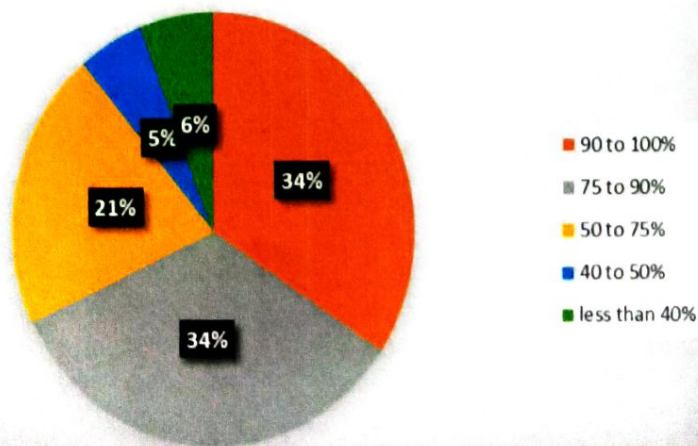
■ Challenging ■ Adequate ■ Inadequate ■ Dull ■ Irrelevant

**Q.2. Your background for benefiting from the course was**



■ Highly relevant  
 ■ Relevant  
 ■ Partly relevant  
 ■ Mostly irrelevant  
 ■ Completely irrelevant

**Q.3. How much of the syllabus was taught in class?**

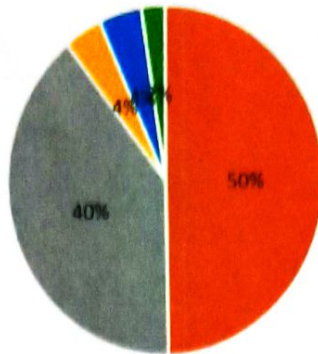


■ 90 to 100%  
 ■ 75 to 90%  
 ■ 50 to 75%  
 ■ 40 to 50%  
 ■ less than 40%





**Q.4. What is your opinion about the library holdings for the course?**

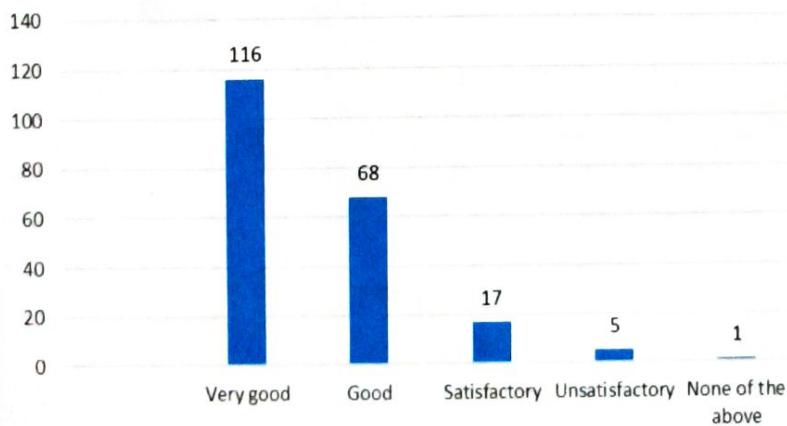


■ Excellent  
 ■ Adequate  
 ■ Inadequate  
 ■ Poor  
 ■ None of the above

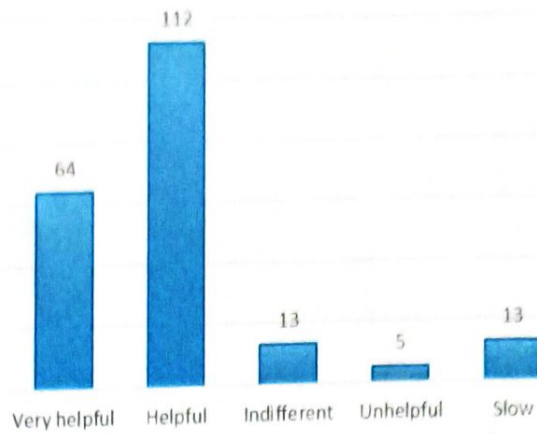
**Q.5. How do you rate the student-teacher relationship in the RGC as a whole?**



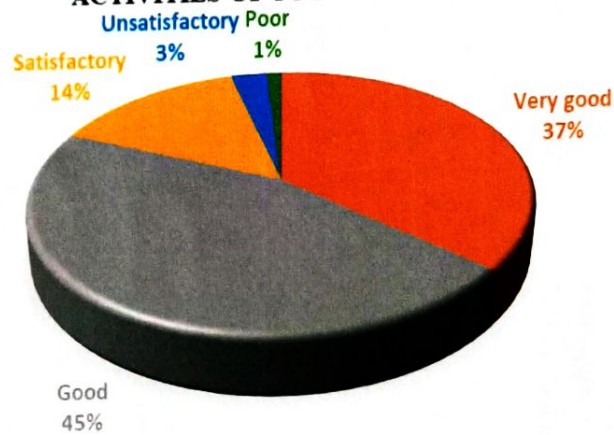
**Q.6. How do you rate the student-teacher relationship in your department?**



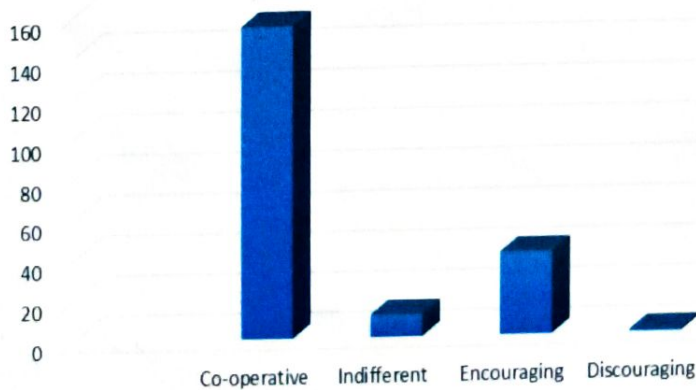
**Q.7. How do you find the RGC's administrative offices?**



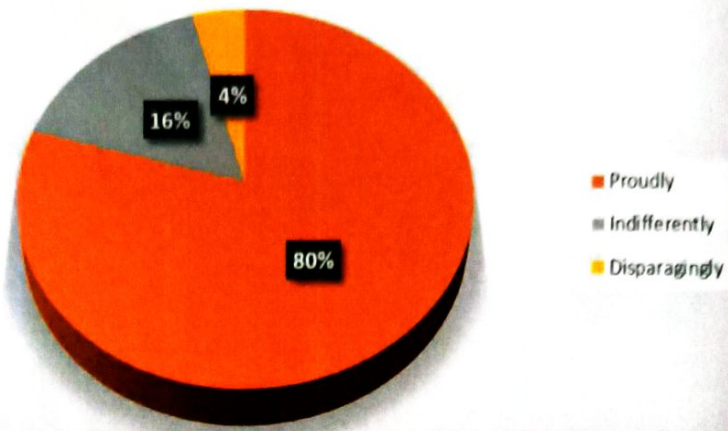
**Q.8. HOW DID YOU FIND THE EXTRACURRICULAR ACTIVITIES OF YOUR COLLEGE?**



**Q.9. What was the attitude of teachers to extracurricular activities?**

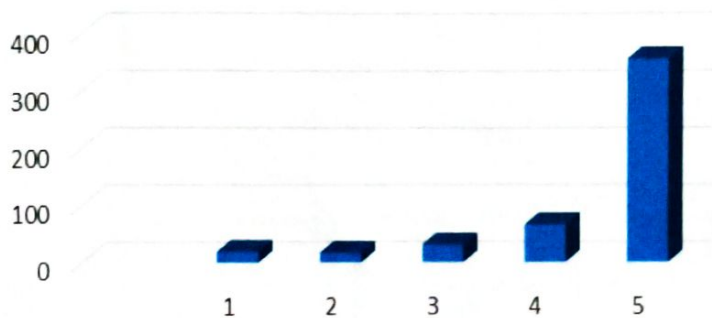


Q.10. After leaving the RGC how will, you talk about it?

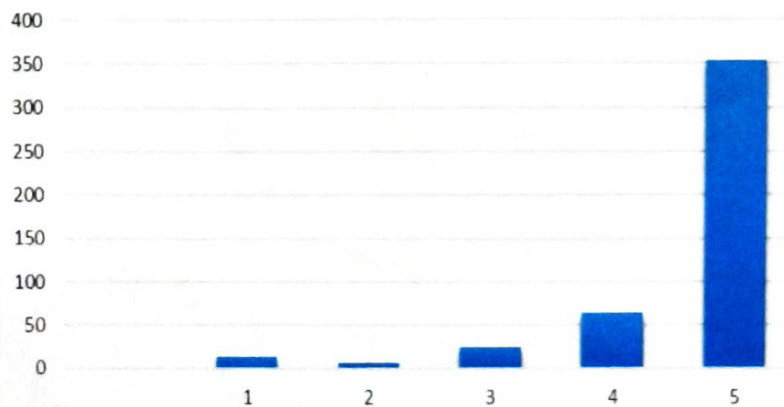


Teacher Feedback Analysis:

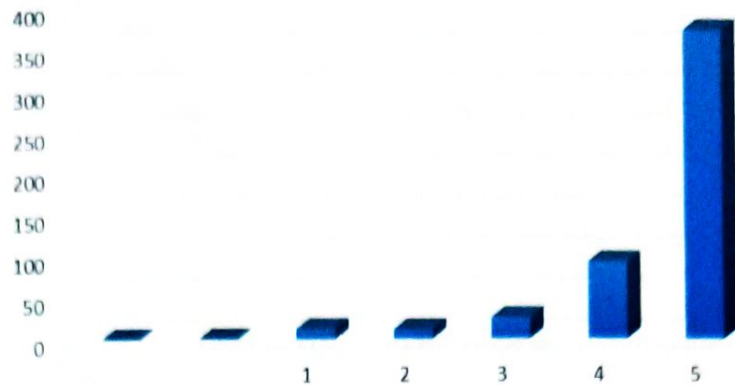
Q.1. Your subject teacher is punctual before and after class is over



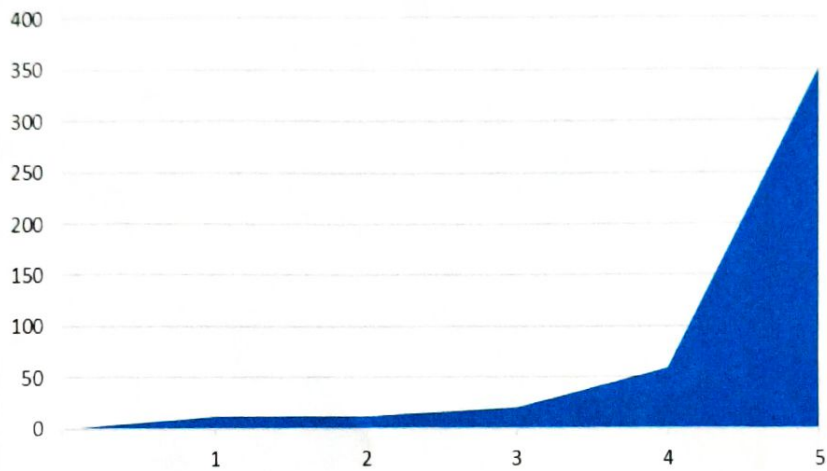
Q.2. Teacher comes with full preparation of the topic to be taught.



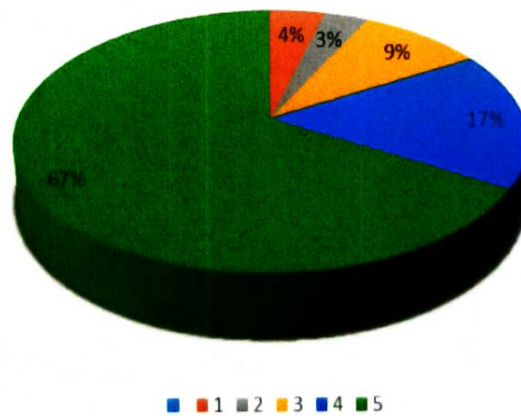
**Q.3. Teacher takes daily attendance and enquire about absentees and keep the record.**



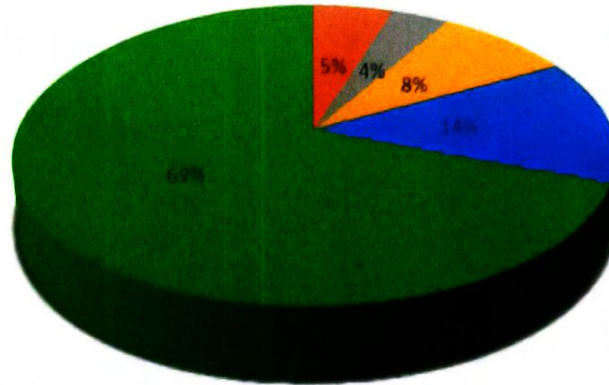
**Q. 4 Daily teaching takes place as per the timetable.**



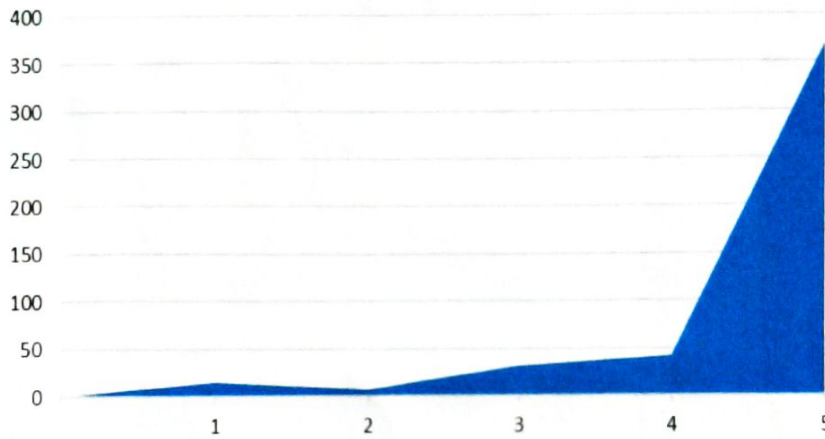
**Q.5. Teacher teaches using different teaching aids ( means teaching methods)**



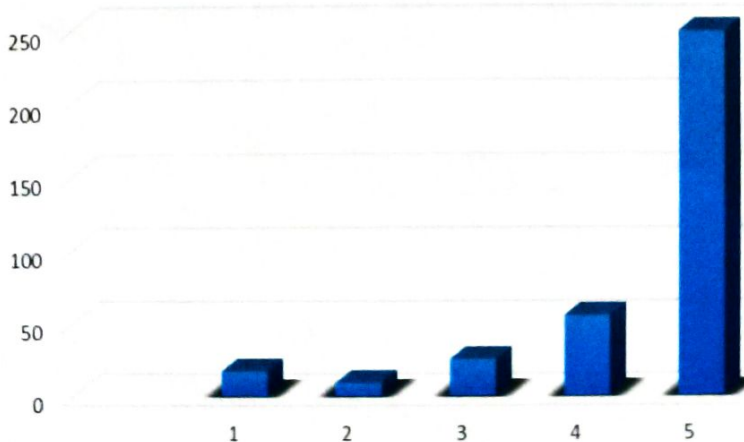
**Q.6. Teacher explains giving examples and references or practicals.**



**Q.7. Teacher allows you to ask queries or questions during the class.**



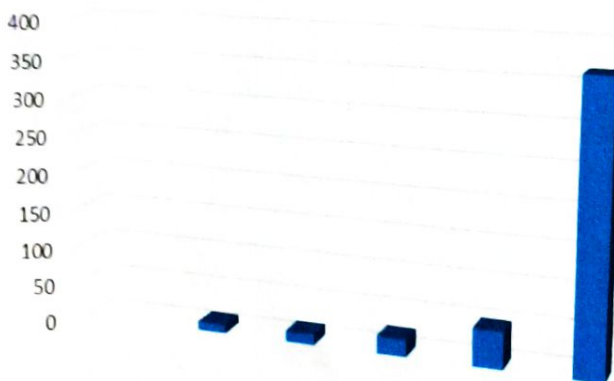
**Q.8. Teacher maintains class discipline and has class control.**



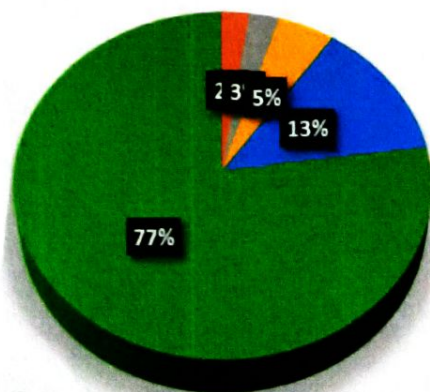
**Q.9. Teacher organises trips/seminars/workshops/Industrial visits/competitive exam**



**Q.10. Teacher helps you in solving difficulties in the subject.**



**Q.11. Teacher has logical and clear thinking while teaching a subject.**



**I/C PRINCIPAL**  
 Rajiv Gandhi College of Arts, Commerce & Science-  
 Vashi, Navi Mumbai - 400 703



Sainath Education Trust's

# Rajiv Gandhi College

of Arts, Commerce, & Science. Vashi Navi Mumbai.  
{Permanently Affiliated to University Of Mumbai}  
**ACCREDITED BY NAAC, GRADE 'B'**

## Feedback Action Taken Report-2019-20

1. Parents teacher meeting is conducted at departmental level and action is taken for improvement.
2. Letters and messages are seen by parents to inform them about their ward activities. Suggestions and com given by the guardian are also considered for future development.
3. Due to Covid-19 not much action has been taken.

*Sawant*  
Co-ordinator  
Internal Quality Assurance  
Rajiv Gandhi College of Arts, Commerce & Science  
Vashi, Navi Mumbai.



I/C PRINCIPAL  
Rajiv Gandhi College of Arts, Commerce & Sciences  
Vashi, Navi Mumbai - 400 703.